



COMPANY PROFILE

FREIGHT FORWARDING
HANDLING
IMPORT & EXPORT
TRADING



FNET

CK96/43347/23

INTRODUCTION

Afnet is a freight forwarding company based in South Africa with offices in Johannesburg, Durban and Port Elizabeth.

We strive to offer all our clients and contractors the best possible service and value for money in the industry, while offering the full package regarding logistics and solutions.

Our main emphasis is on service and we are proud of what we have been able to achieve in this area, coupled with a continuous improvement Programme.

Afnet was formed in 1996, and was started primarily as a transport company, but has since expanded into the logistics solutions we now offer.

This includes transport, warehousing, procurement for our foreign based clients, handling, packing, crating, trans-shipping, handling hazardous cargo, abnormal cargo and the little extra the client may require.

We have retained the same bank account from our inception and managed to build solid references within our company.

We adhere to strict accounting practices and have retained the services of our auditing firm Q.R. Smith and Associates.

In addition to this we continue to expand our services and the routes we offer and intend to continue this trend.

In 2007 we expanded our warehousing to be able to accommodate more of our clientele requirements, as well as increase the tonnages we can now handle.

We have managed to achieve steady growth in every sector since the first year we commenced business and through service and the loyalty of our clients will continue to do so.



Facilities

Internal

- Registered with Customs to process Bill of Entries
- Able to do all export documentation
- Operations department including warehouse and handling co-ordination
- Border clearing when required
- Customs inspections for rebate purposes
- Accounts department which is Reserve Bank approved for incoming and outgoing foreign payments
- Commodity procurement when required
- Tracking department for daily up-dates sent via e-mail
- Pod Department
- Messengers for documents and small cargo collection
- Air and Sea division for imports and export



Facilities

External

- **Durban, South Africa**
 - 26 500m² Bonded facility OS and SOS with rail access
 - Reach-stackers and forklifts, ramps, weighbridge, 2 200m² CCTV and armed response
 - Customs transit bond
- **Johannesburg, South Africa**
 - 1 500m² warehouse
 - 29 500m² Bonded warehouse, OS and SOS
 - Reach-stackers and forklifts, ramps, weighbridge, 1 500m² outdoor lay down area
 - Customs
- **Beira, Mozambique**
 - 9 800m² Bonded facility
 - Forklifts
 - 24 Hour security
- **Dar es Salaam, Tanzania**
 - 17 700m² Bonded facility near port, forklifts, etc.
- **Walvis Bay, Namibia**
 - 3 000m² Bonded facility, 5 dock levelers, side-loaders, forklifts, CCTV and armed response



Vehicles & Routes

We Offer Weekly Consolidation Services TO The below Destinations:

- Zimbabwe – Bulawayo, Harare
- Botswana – Gaborone, Francistown
- Zambia – Lusaka, Ndola, Kitwe & Chingola
- Malawi – Blantyre & Lilongwe
- Mozambique Maputo, Beira – Warehouse only
- Namibia – all destinations
- DRC – Lubumbashi
- Tanzania – Dar es Salaam – warehouse only

We Offer express / dedicated vehicles - 1; 4; 8 & 12 Tonners to The Following Destinations:

- Zimbabwe
- Botswana
- Zambia
- Malawi
- Mozambique
- Namibia
- Rwanda
- Kenya
- DRC
- Angola
- Tanzania
- Swaziland
- Lesotho



Vehicles & Routes

We are able to offer the Following vehicle Combinations:

- Break-bulk, Containerized Cargo, Hazchem, & Radioactive
- 6 to 30-ton crane trucks
- 25-ton step-decks
- 40 to 120-ton low beds
- 30-ton triaxles
- 34-ton super-links
- Drop sided trailers
- Trailers with Up-rights
- Refrigerated trucks



Vehicles and Routes

Monitoring & Communication

On this fleet we implement monitoring and communication systems that enable us to keep constant contact with every single truck and driver - every driver is equipped with a cellular phone and all vehicles are fitted with state of the art tracking systems that allow us to monitor the progress of the entire fleet through GPRS satellite.

We predominantly specialize in 3 niche delivery services: express transport, abnormal loads and delivery to rural and inaccessible destinations throughout Africa.

With our versatile fleet of vehicles, along with a tight hands-on management control, we are able to deliver freight of any size to any destination as required by the client.

We Currently Offer and Operate the Following Routes:

- Local / National Transport
- Zimbabwe
- Zambia
- DRC
- Malawi
- Mozambique
- Botswana
- Namibia
- Angola
- Tanzania
- Kenya



Specialized Division

Project Cargo

You can rely on Afnet to get your shipment, irrespective of size, to the right location at the right time, regardless if it is a parcel to a neighboring country or a 100-ton module to a remote location across Africa.

Safe, compliant and reliable management of project logistics, oversized cargo and heavy lift, including global multi-supplier projects, from pickup through consolidation and delivery to fabrication facilities and final project jobsites.

We work using local and global infrastructure, executing project movement by intelligently coordinating resources and orchestrating timing of movements.



Specialized Division

Radioactive loads

Afnet have been certified and registered with the Nuclear Regulator and the Department of Health to transport radioactive material, including carrying spent nuclear fuel from operating and decommissioning nuclear reactors, radio-pharmaceuticals needed for hospitals, sealed radioactive sources needed in the construction industry and, for non-destructive testing in the oil mining and gas sector.

Afnet ensure we meet exacting international safety standards carried out through a Programme of targeted, risk-informed inspections and engagement with relevant duty holders, as well as compliance with safety and security legal requirements

We transport locally within South Africa as well as to all Sub Saharan countries

Afnet also has DPS accreditation, allowing us to carry nonferrous metals for our clients.



Specialized Division

Container logistics Division

Afnet's container division supplies container logistics solutions to all areas with- in South Africa, and over border Regions. We specialize in container rentals, cabotage, and sales. Please contact Michelle O' Brien for any assistance in this regard Afnet Durban (Pty) Ltd

Container Cabotage

Cabotage is the repositioning of empty containers from one region to another for the shipping lines /leasing agents – these can be used to containerize your loads. We offer a wide spectrum of Cabotage locally (Jhb, DBN, Cpt, P.E etc.), and Over border Cabotage (Malawi, Zimbabwe, Zambia etc.)

Container Sales

We can assist you with your container purchases in South Africa. This includes 20' & 40' GP's/HC's, Reefers, Open Tops, Converted containers etc.

Container Rentals

We offer various Container rentals within South Africa

- Jhb to Jhb or DBN to DBN or Cpt to Cpt
- Jhb to DBN/Cpt
- DBN to Jhb/Cpt
- Cpt to Jhb/DBN
- P.E. to Jhb

We offer various Container rentals from South Africa with turn in options into over border Regions such as:

- Zambia–Lusaka, Kitwe, Ndola
- Zimbabwe–Harare, Bulawayo



Accreditations

BBEEE

- Period 2010–2011 Level 6
- Period 2013–2016 Level 5

Health & Safety and environmental

- 3 staff completed Medical Aid Courses
- 1 staff member is a qualified Nurse
- 2 HSE Officers
- 3 Licensed staff certified to operate a forklift in excess of 45 tons
- 2 additional Licensed staff certified to operate a forklift in excess of 7 tons
- 1 Abnormal cargo specialist
- All staff involved in loading and handling cargo have been issued with PPE
- We have an environmental policy and staff are encouraged to;
 - Conserve electricity
 - Conserve paper
 - Be responsible in their actions to the environment
- We contract the company Waste man to handle all our waste responsibly
- We contract the company Redisa to handle our scrap tyres responsibly
- We have a contract with Mondi Recycling so all waste paper is recycled
- We also have a full grease trap and separation pit
- All vehicles go through safety and mechanical inspection before being dispatched to loading point and drivers PPE is checked to ensure that they have all the required PPE.



Accreditations

Code of Conduct - ethics

- We adhere to a strict code of ethics
- All business transactions are honest and ethical
- We practice confidentiality and efficiency
- If we are at fault or there is an error on our side the client is advised
- Errors in tracking are corrected
- Anyone associated or employed or contracted to Afnet will be dismissed if they are in breach

Anti-bribery & Corruption policy

- We have a strict Anti-Bribery & Corruption Policy and will willingly undergo assessments for clients when requested

Radioactive

- This accreditation enables Afnet to carry explosive, radioactive and other hazardous cargo

DPS (Africa)

- DPS March accreditation enables Afnet to carry high value non-ferrous cargo (Copper, Cobalt etc.)

Workman's Compensation

- Afnet has obtained a letter of good standing from the Workman's Compensation Fund



Accreditations

Insurance

- Same insurer for 11 years
- Insured with Select Independent Insurer's
- Underwritten by Transit Underwriting
- Tailor made insurance
- Public Liability Insurance R10 million
- Carriers Liability Cover R10 million
- G.I.T. Insurance Cover R1 000 000
- Insurance certificated available on request

Licensed bonded Carriers

- Afnet are licensed with customs to carry bonded cargo
- Remover codes are available on request



Contact US

Afnet Johannesburg
5 Dormehl Street
Anderbolt
Boksburg
1459

Office: (011)894-7591

John McGill – Abnormal and Specialized Projects

Email: john@afnet.co.za

Mobile: + 27 60 984-9811

Trevasen Perumal – General cargo and Procurement

Email: trevasen@afnet.co.za

Mobile: +27 60 984-9811



Terms and Conditions

Afnet CC does not accept any liability for the Insurance for such goods or services. It is further stated that all goods which are transported, handled, or stored on behalf our clients, should have adequate insurance cover on a "door to door at destination" basis, and should include all freight and customs costs.(Such cover shall be provided by the clients.).

Insurance facilities between yourselves and the Insurance companies at your risk and cost can be arranged on your behalf on request in writing and this should be agreed to in writing prior to loading. All excesses and premiums are for your account and no liability whatsoever in the respect of claims being rejected for whatever reason shall be passed onto Afnet CC or any of its subcontractors and/or agents

Please note that by acceptance of this quotation (receipt of your Purchase / Transport Order) you are agreeing to the conditions of this Quotation as well as the Standard Terms and Conditions of Afnet, a Copy of which is Available on Request. Please note that no payments may be withheld, for any reason whatsoever, howsoever caused or arising. Any / All additional costs will be charged for at a cost + 15% basis and is payable on presentation of invoice.

Afnet Staff are not Document Clerks and as such, Afnet will not be held responsible for failure by the Client's Destination Site Representative to endorse Delivery Notes or any other Client Documentation as per their requirement at Destination/Offloading Site. It is incumbent upon the Client to ensure that their Destination Site Representative knows how to handle the Client's Documentation and return it to Afnet's driver complete and properly endorsed.

Freight consignments destined for the DRC now need to have required document certification known as "Fiche Electronique des Renseignements a l'importation" (FERI).

The requirement for "CERTIFICATES OF DESTINATION" certification will now be introduced on all road, rail and airfreight shipments dispatched, and manifest dated from the 1st March 2019.

Please note that all clients who export by road or rail to the DRC must ensure that the necessary certification is in place prior to despatch. The same applies for shipments from outside South Africa which transit through South Africa. Afnet will not be liable to obtain these certifications, this remains the client's responsibility. Cargo will not be despatched without the Certificate of destination and the BIVAC certificates, any loaded vehicles waiting for these



Terms and Conditions

documents will be billed at our Standing Time rates until the documents are received

Price quoted is per unit/item/load/package unless otherwise specifically noted otherwise

IF GIT IS REQUESTED, QUOTED ON, AND ACCEPTED BY BOTH PARTIES IN WRITING, THE FOLLOWING TERMS SHOULD BE NOTED

We must have a contract between Afnet CC and yourselves or no claim will be accepted.

The following items are NOT insurable by Afnet CC;

Cobalt and Copper / Cranes, Tractors and Earth Moving Equipment / Electronic goods (DVD's / TV / Hi-Fi / Radio / Cell) / Computers / Refrigerated cargoes / Explosives, Arms and Ammo / Modified vehicles

This is over and above the usual exclusions like perishable goods, flowers, bullion, documents, collectables, sim cards, tinned fish etc.

Excesses apply. (5% General cargo losses, 10% Hi-jacking and theft with armed escort, **25% with no escort.**

Afnet CC accepts no responsibility whatsoever for loading and/or offloading of the cargo, this remain client's responsibility, unless specifically quoted on in writing and accepted in writing

There are insurance excesses which are for your account unless you wish to take out and pay for additional cover on the excess.

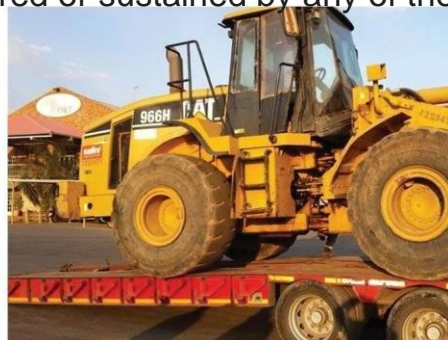
In The case of tail end Risks (loading from Sea or Air Ports) , or used goods of any nature, Cover will only be considered if a pre-shipment survey is undertaken by a marine surveyor or an independent technical expert at the Clients expense and such report is submitted to and accepted by Underwriters prior to loading.

Where Insurance cover is requested and agreed to in writing, all excesses are for the clients account

The limit of our liability will not exceed R 2000 per load

We strongly urge customers to take out their own insurance whereby we then go under our terms of goods carried at owners' risk.

Afnet shall not be liable for any loss of damage (whether direct loss or consequential loss) caused to any person or property (including without limitation from the Client, its agents, subcontractors and employees) from whatsoever cause arising and/or arising from the agreement itself or any actions under the agreement between the Client and **Afnet. The Client** hereby indemnifies Afnet in respect of any liability, damage and/or loss and/or death persons and/or expense (including interest and penalties) which may be incurred or sustained by any of the aforesaid and/or for any



Terms and Conditions

costs and/or any claims, arising out of any incident whatsoever, including without limitation any claims from the persons referred to above in brackets or their successors-in-title. For the avoidance of doubt, the transportation of goods by Afnet is affected at the sole risk of the Client and/or the owner of the cargo.

Afnet will not be held liable for any Shipping Line container late turn in cost, detention fees, and any such nature whatsoever. Containers are moved on the understanding that Afnet will strive to deliver cargo and return the empty container to the nominated depot as quickly as possible but cannot guarantee specific turn in dates. All Shipping Line containers are accepted on the basis that Afnet will use such containers for return loads. If Afnet are not allowed to use containers for return loads and additional fee applies to return the container empty – again no container Detention or Demurrage charges will be accepted or payable

Likewise Afnet does NOT accept any delivery time specific cargo and whilst we will strive to deliver cargo in good time delays do occur and as such we accept no responsibility / liability for late deliveries charges, penalties, subsequent penalties and the like of any nature, and our Invoice will remain payable

Only original South African export / transit documents can be guaranteed to be returned to the Customer or sending party. Original Customs documentation for Transit or Import countries cannot be guaranteed. Please arrange with receiving Parties to forward all original documentation needed directly to the Customer or sending Party as needed

Afnet do not allow any accounts to be offset, any amounts due by either Party must be paid on an Individual basis / Per Invoice as applicable

Please note that any costs incurred after a firm order is received, then order subsequently cancelled will become payable immediately. In the case of abnormal / out of gauge / super load order received, then subsequently cancelled will incur a cancellation cost equal to 10 % of the total rate applicable, minimum R 5000 per load - Afnet is under no obligation to offer proof of costs incurred

All Cargo carried subject to our Terms and Conditions, which supersedes all other Terms and Conditions, which may be in place.

We allow 1-day loading, 1 day offloading and 2 days for clearances at borders Demurrage will be charged at a rate of R 3500.00 per triaxle & R4500.00 per super-link and R 6500 per abnormal vehicle per day



Terms and Conditions

Prices quoted are subject to statutory increases, increasing outsourced products and services, running costs, Rates of Exchange as well as any changes or increases in duties, tariffs and regulations that may occur prior to, or during the term of this contract

Excludes export clearance fee of R 770 per maximum of 5 items per bill of entry and an acquittal fee of R 700 / set

We are not responsible for breakages, theft or leakages of cargo whilst in storage or transit.

All cargo collected and loaded will be deemed to be properly and suitably packaged for cross border transport, we accept no liability for any breakages and/or damages

Payment on above to be made on 30 days on POD

Rates valid for a period of 14 days only

Subject to vehicle availability and suitability, the above prices are based on information supplied to us and any deviation from this information could result in our prices changing accordingly

Afnet cc makes use of sub-contractors as well as our own fleet to carry loads.

Consol Cargo rates based on cargo being delivered to our Warehouse

Collection rates on request

Rates exclude any import clearing, taxes, duties or surcharges applicable at final destination-Importer to nominate import agent at the border

This quote is unless otherwise specified for Non-hazardous cargo. Certain Hazchem cargo is subject to a 13 % surcharge – subject to confirmation on a per quote basis.

Afnet CC will not be held responsible at all for spill clean up services, costs or third party claims related to this in respect of any accident or incident that may occur in the transportation of Hazardous goods on our vehicles or any appointed subcontractor vehicles of Afnet CC from collection to delivery points. This remains client's responsibility

According to the Customs Act 91 of 1964 as amended (section 39 (1) (c)), every entry which is cleared through Customs, must be accompanied by a Clearing Instruction. Please ensure that every load coming through the border has a completed clearing instruction, Customs will reject any file which have no clearing instructions. Any fines imposed as a result of no Clearing Instruction or incorrect information will be for your account

As per the Road Traffic Act clause 330A and 330B, it is the consignors and consignee's responsibility to ensure vehicles are loaded correctly; axle weights and GVM once loaded are within legal limits. We accept NO responsibility for any axle loading / GVM overweight issue, and any fines,



Terms and Conditions

costs or costs of legal action to be defend any penalty from overloading will be for the account of the client

Client to provide all relevant hazardous documentation/literature, i.e. trem cards, haz boards, specialist & spillage team contact numbers, etc.

Rate / quote is subject to final verification of the dimensions & weights

Cargo must be suitably packaged to withstand securing of the load without damaging the load

Mozambique Final clearance: must be arranged prior to loading, Intertek inspection must be arranged prior to loading in JHB, Contra Marca number to ne available on loading

- Pre-Shipment inspections – these are to be done and are the responsibility of the exporter / suppliers, Afnet are not responsible for these inspections whatsoever

- Abnormal loads -

Clients Responsibilities

To provide clear access for the delivery of abnormal loads

To provide suitable “Lay Down” area, for equipment delivered to site

To provide engineers drawing confirming mass, dimensions and centre of gravity.

Please note that this Quotation supersedes all previous Quotations pertaining/related to the above, sent/received prior to the date and time attached or noted in this transmission/communication.

2 Hours to load / 2 Hours to off-load, thereafter standing time charged per Truck / per Hour (Based on an eight (08) hour day)

Quotation is for running machines only. On own wheels/tracks and/or own power.

Client to ensure/provide that there is sufficient tie-down and lashing points and Client to supply suitable transport saddles. If Required.

Please note that Loading & offloading is at the sole risk of the client, unless otherwise negotiated in writing.

Client is responsible for All Loading, Off-loading, All Rigging, Risk Assessment, Method Statements and the Like. If Required.

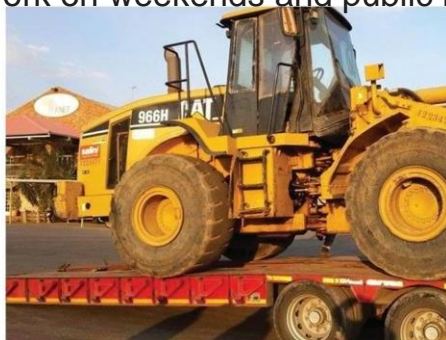
Quotation is based on supplied information. Deviation could result in penalties, additional costs and/or a re-quote.

Additional kilometres will be charged accordingly.

Quotation excludes site inductions / Medicals and the like.

Quotation subject to statutory increase effective from date of statutory increase.

Quotation excludes work on weekends and public holidays.



Terms and Conditions

Quotation excludes VAT and Quotation is valid 7 days.

Please note that Afnet CC accepts no liability for Damage to Fibreglass, GLASS or Electronic Components, howsoever caused or Arising.

Unless otherwise specified, the risk in the goods always lies with you and we therefore recommend that you affect the appropriate insurance.

No settlement discount has been allowed for; our terms are strictly Net.

Quotation excludes direct loading / discharge from Ship / Vessel / Barge or Floating Crane.

Quotation subject to the availability of a suitable route, Personnel and Equipment.

All work undertaken is strictly as per our terms and conditions - (Copy Available on Request)

Please read 'Quotation Terms' below.

Cross Border Terms:

1 Day/s to Clear, thereafter standing time charged per Truck / per Hour - (Based on an eight (08) Hour Day)

Quotation excludes ALL customs formalities.

Quotation excludes Police Escorts in all Countries.

Quotation excludes super-load Clearances in All countries.

Quotation excludes Bridge inspection in All countries. If Required

Quotation excludes Professional Traffic Engineers Route Survey / Clearance in All countries. If required.

Client is to provide All Cross-Border documentation and is to supply a Clearing Agent at ALL Border Posts to facilitate the Transfer of BOTH Equipment and Cargo to and from destination, Including TIP's.

All Cross Border Abnormal permit/s payments/costs to be settled prior to loading.

Destination to be confirmed before loading, in writing, with GPS Co-Ordinates where possible.

Quotation is based on the most direct route.

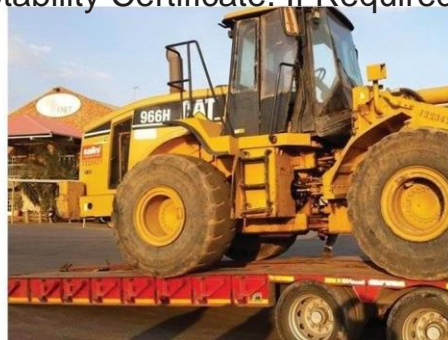
Super Loads:

Quotation excludes Super Load Clearance. If Required

Quotation excludes Bridge inspection. If Required

Quotation excludes professional load supervision. If Required.

Quotation excludes Stability Certificate. If Required.



Terms and Conditions

Quotation excludes weighing, by a professional engineer. If Required.

Quotation excludes Professional Traffic Engineers Route Survey / Clearance. If required.

Quotation excludes All Telkom / Eskom / Traffic Officer Escorts and the like, If Required.

Quotation excludes any Geometric and Structural Clearances.

Quotation excludes Traffic Management Accommodation Plan/Survey. If Required.

Quotation excludes any costs or charges incurred for bridgework, or road works that may be deemed necessary by the authorities, or detours made by inclement weather, or change of route for any unforeseen reason incurred after the quotation is accepted.

All port and shipping clearances

Storage and handling are not included in this quotation.

Prices quoted are subject to availability of plant, equipment and personnel Afnet CC will not be held liable for claims emanating from delays due to labour strikes, non-availability of police escorts, shipping delays, adverse weather, force majeure, accidents and breakdowns, or any other cause beyond our control. Any additional costs incurred in this respect will be for your account.

Final border clearance into country of destination is not the responsibility of Afnet CC and an allowance of 48hrs has been provided for all clearance. Thereafter a demurrage notice will be issued as per the rate outlined above

Loading of cargo/vehicles as quoted above constitutes acceptance of all the Terms and Conditions above

